

# Learning about Climate Change and Human-Health Impacts with the CHANGE Viewer

Sneha Rao<sup>1</sup> and Robert R. Downs<sup>2</sup>

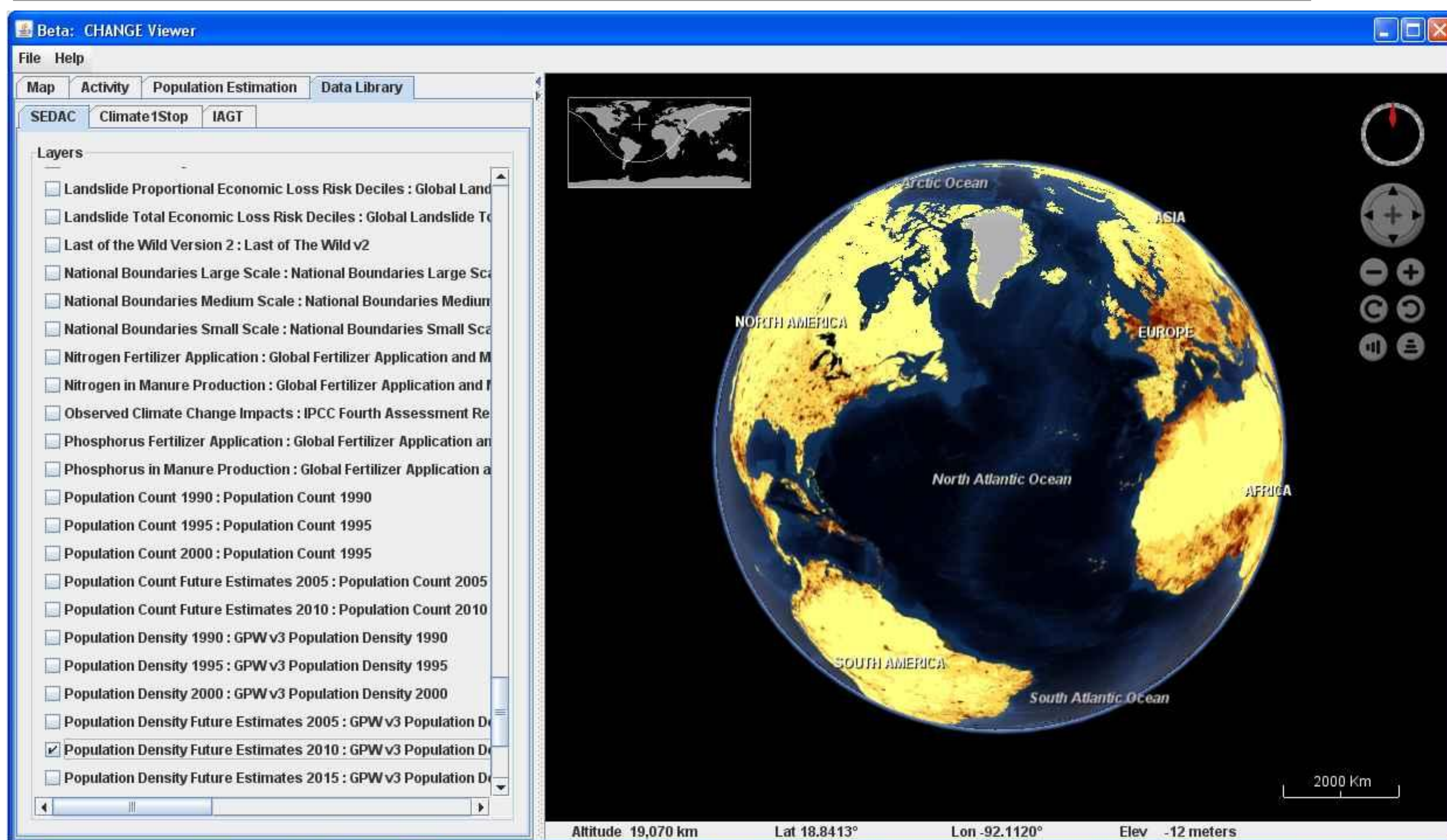
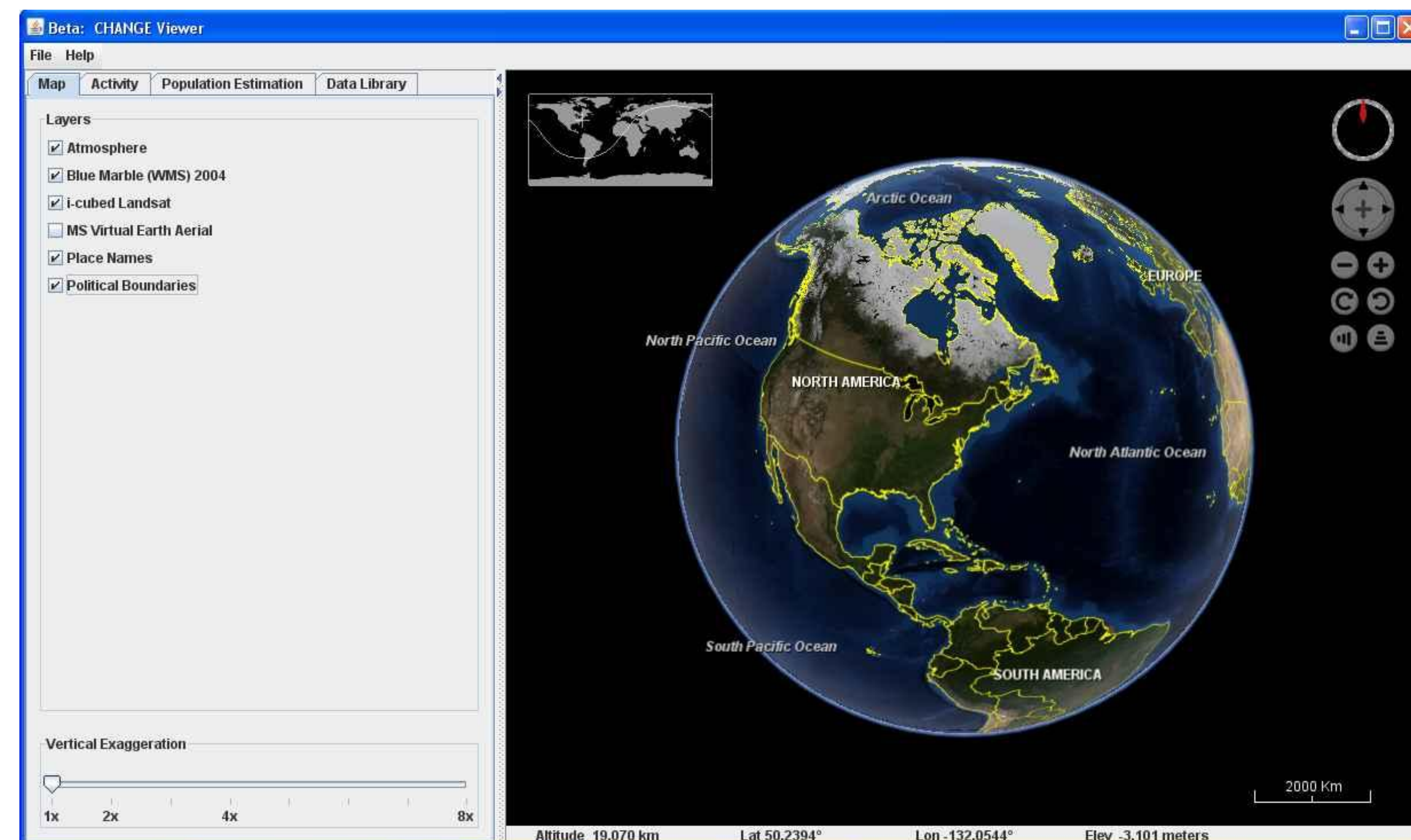
NASA Socioeconomic Data and Applications Center (SEDAC),  
Center for International Earth Science Information Network (CIESIN),  
Columbia University

<sup>1</sup> srao@ciesin.columbia.edu

<sup>2</sup> rdowns@ciesin.columbia.edu

Prepared for Presentation to the 2012 Winter Meeting of the  
Federation of Earth Science Information Partners (ESIP)

January 4-6, 2012, Washington, DC



With growing concerns about change in climate and the impact it has on the environment we live in, it is important to develop resources for teachers, students and the general public to improve their understanding of global climate change.

Sponsored by NASA's Innovations in Climate Education initiative, the Center for International Earth Science Information Network (CIESIN) at the Earth Institute, Columbia University, and the Institute for the Application of Geospatial Technology (IAGT) at Cayuga Community College have developed an interactive tool known as the Climate and Health Analysis for Global Education (CHANGE) Viewer.

The CHANGE Viewer is developed on a NASA World Wind Software Development Kit (SDK) that runs on Windows or MAC computers. Using existing web resources, such as the Population Estimation Service, a Web Processing Service (WPS) provided by the NASA Socioeconomic Data and Applications Center (SEDAC), and the Climate Mapper, a monthly climate observation plug-in developed for SERVIR by the University of East Anglia's Climate Research Unit (CRU) and IAGT, the CHANGE Viewer enables users to visualize estimates of people residing at global and local scales affected by change in climatic conditions.

## Classroom Activities

Activities are being developed for using the CHANGE Viewer to explore various themes in the classroom, including desertification, disease, migration, food security, natural disasters, rising sea levels, and water resources as described on the project website:

<http://www.climatechangehumanhealth.org/>

The authors acknowledge contributions of the Institute for the Application of Geospatial Technology (IAGT), at Cayuga Community College, and the support for the development of the CHANGE Viewer from the NASA Innovations in Climate Education program, through award number NNX10AT46A.



## References:

Climate Change and Human Health – CHANGE Viewer. Available online at <http://climatechangehumanhealth.org/changeviewer/>

Gridded Population of the World, Version 3 (GPWv3), Population Estimation Service. NASA Socioeconomic Data and Applications Center (SEDAC). Center for International Earth Science Information Network (CIESIN), Columbia University. Available online at <http://sedac.ciesin.columbia.edu/gpw/wps.jsp>

NASA Servir project. Available online at [http://www.nasa.gov/mission\\_pages/servir/index.html](http://www.nasa.gov/mission_pages/servir/index.html)

Rao, S., Becker, M., and Work, A. 2011. Classrooms Explore Impacts of Climate Change on Human Health Using CHANGE Viewer. Directions Magazine. October 18, 2011. Available online at <http://www.directionsmag.com/articles/classrooms-explore-impacts-of-climate-change-on-human-health-using-change-v/209137>